



Tile pricing is now guaranteed per quarter!

NEW STOCK ITEMS

Two new lines have just arrived!

We are excited to offer our first stock porcelain ledger panels. 6"x24" stone look ledger panels give you the timeless look of stacked stone, without the cost or maintenance.



Rondine Ledger– Greige 6"x24"

Angel Heart– Light Blue 12"x24"



Take a moment to let the Vibrant depth of the Angel Heart line sink in.

This matte finish tile will capture your customer's attention!



Featured Installation Product

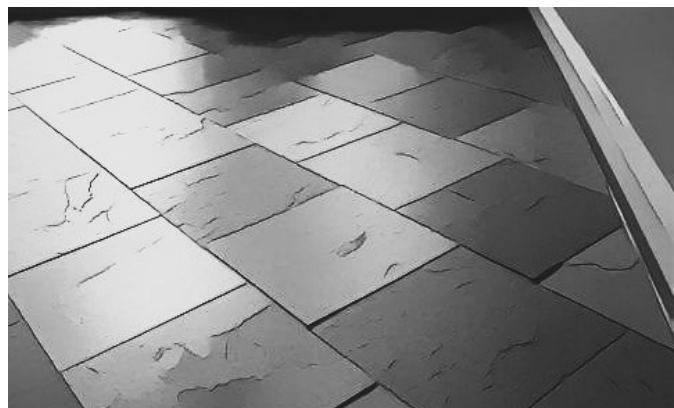
BAM allows for a consistent cure that results in most applications to be ready for grout in 4 hours, while delivering an open time and adjustability time of up to 30 minutes at exceptional bond strength that exceeds ANSI 118.15 requirements. BAM's RapidCure Technology allows for use over uncoupling membranes and various sheet membranes.

Bostik BAM is the recipient of The International Surface Event (TISE):
SURFACES | StonExpo/Marmomac | TileExpo **BEST OF INNOVATION AWARD**

Avoid Lippage issues by following ANSI Guidelines

4.3.8.2 Running Bond/Brick Joint Offset:

For running bond/brick joint patterns utilizing tiles (square or rectangular) where the side being offset is greater than 18" (nominal dimension), the running bond offset will be a maximum of 33% unless otherwise specified by the tile manufacturer. If an offset greater than 33% is specified, the specifier and the owner must approve the mock-up and lippage.



Use a Lippage System such as:

Spin Doctor Lippage Control or
ProLeveling System